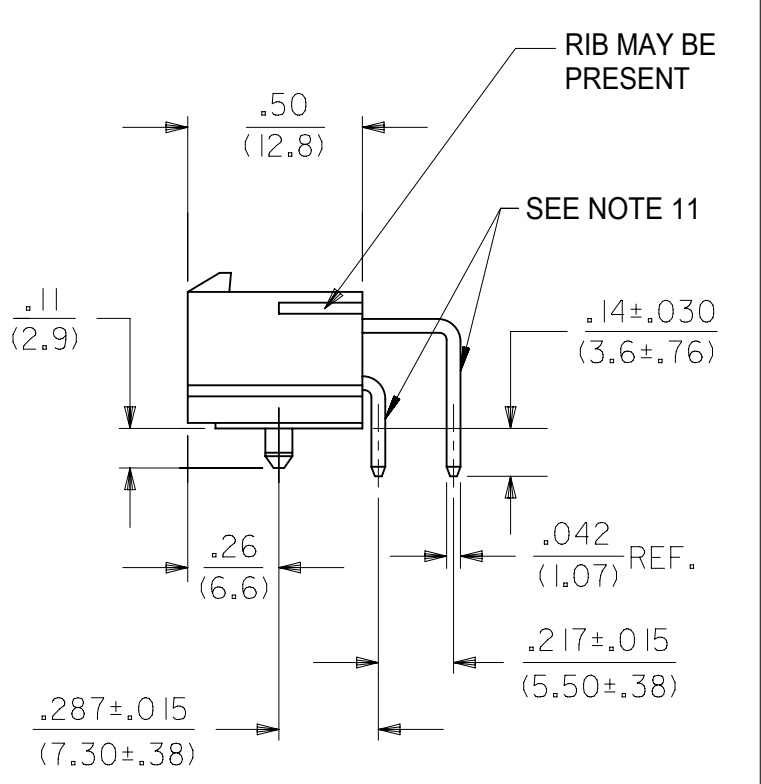
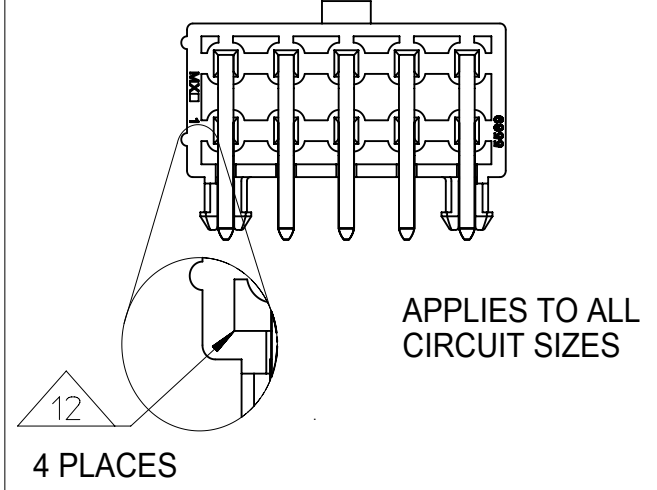


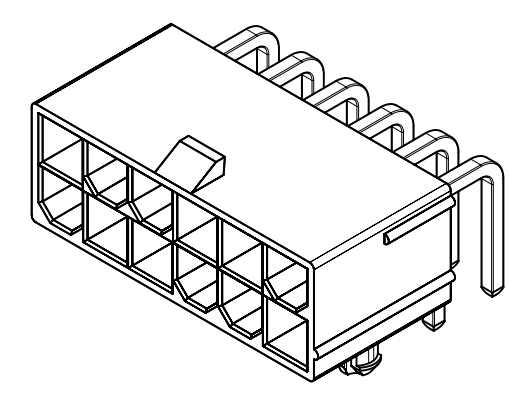
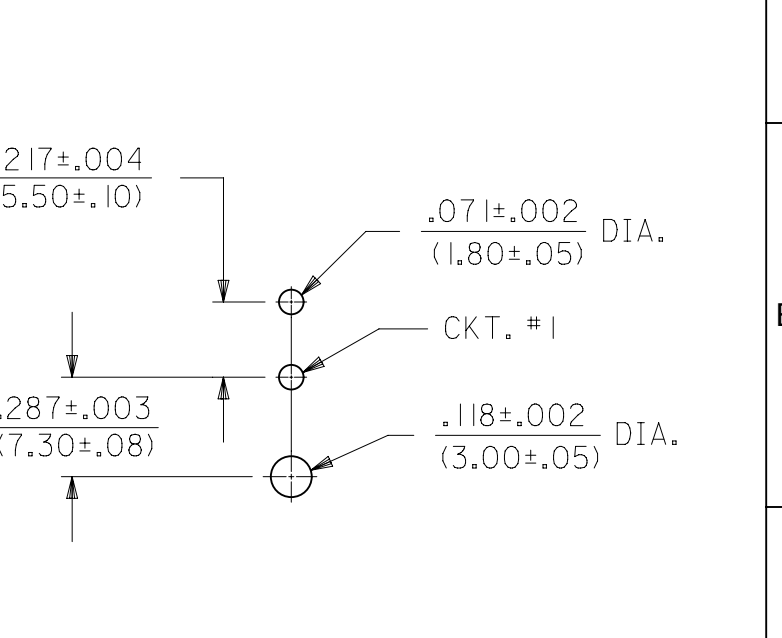
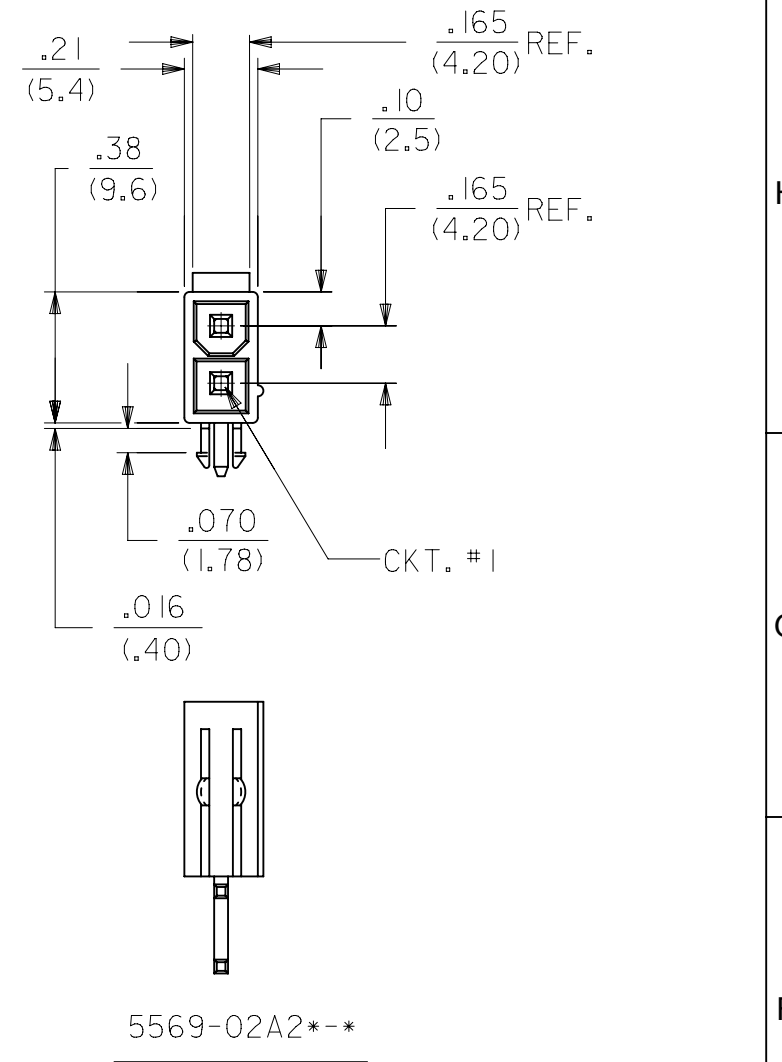
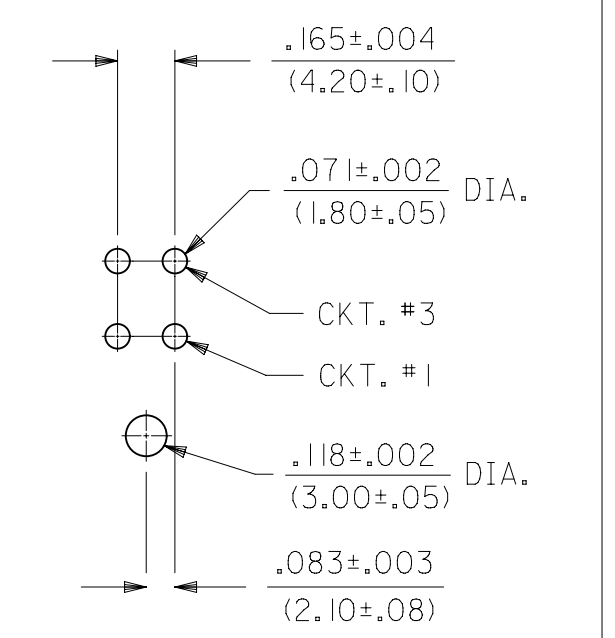
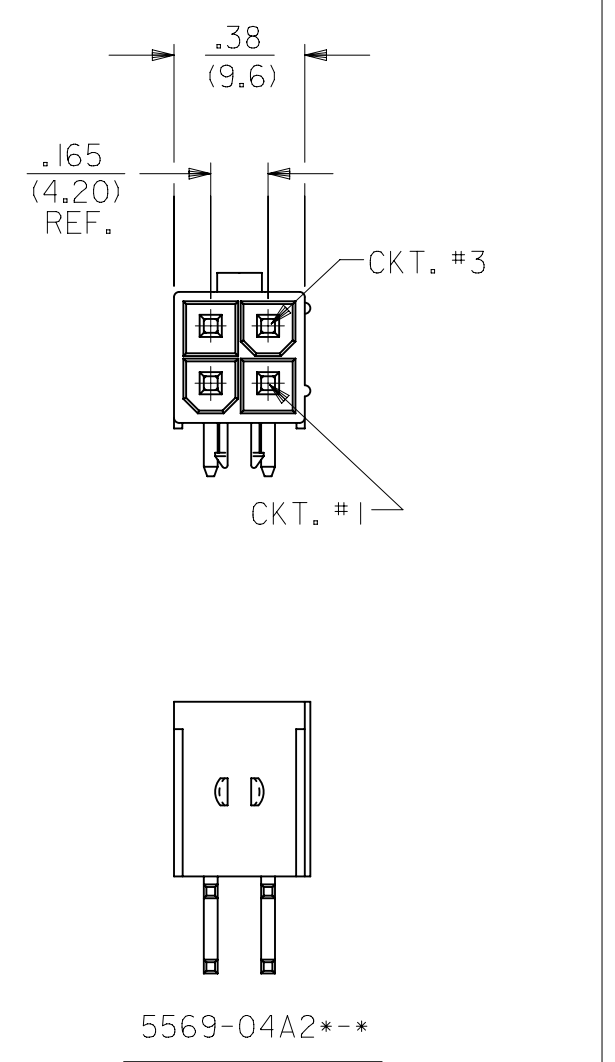
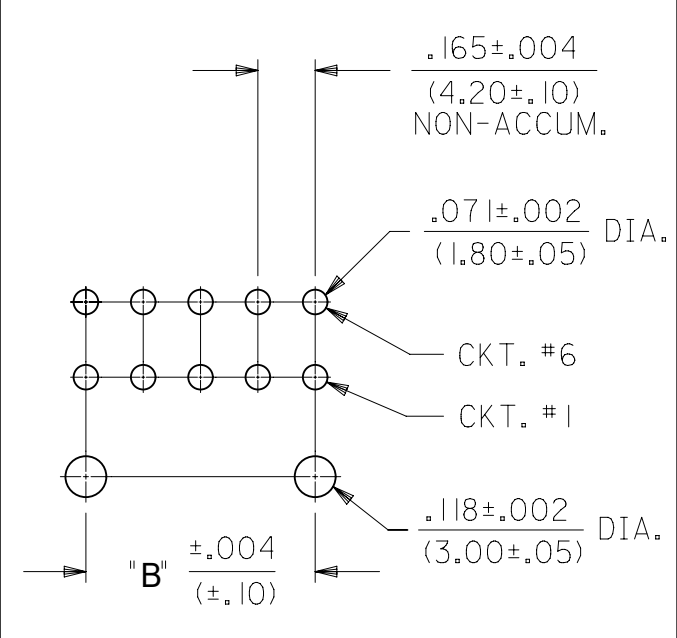
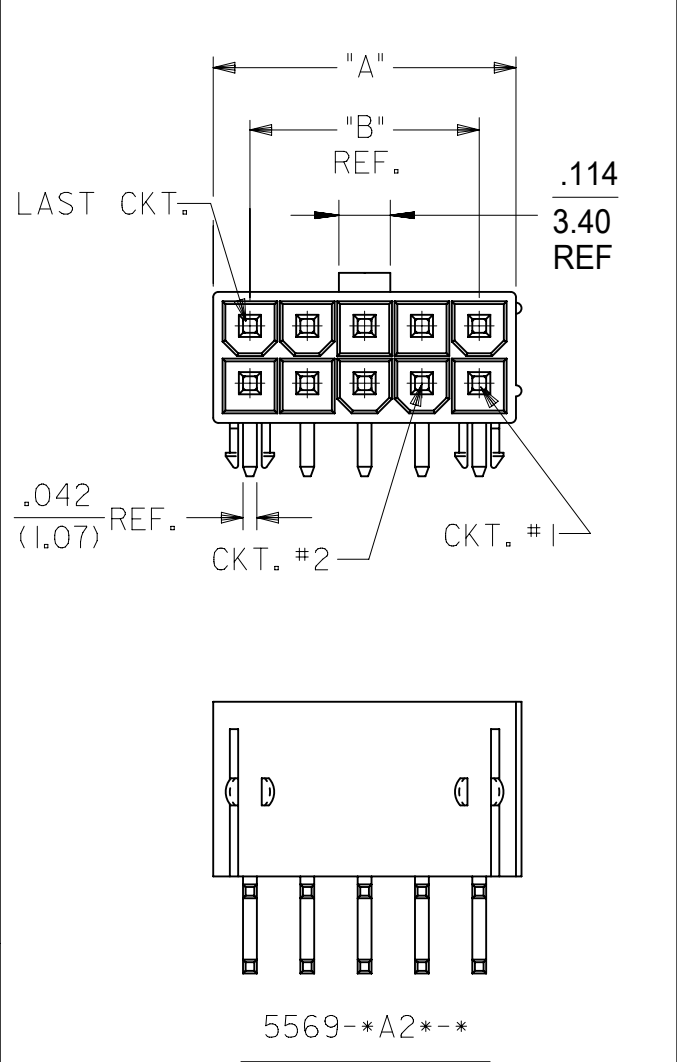
| CIRCUIT SIZE | DIM. "A"       | DIM. "B"       |
|--------------|----------------|----------------|
| 6            | .54<br>(13.8)  | .33<br>(8.4)   |
| 8            | .71<br>(18.0)  | .50<br>(12.6)  |
| 10           | .87<br>(22.2)  | .66<br>(16.8)  |
| 12           | 1.04<br>(26.4) | .83<br>(21.0)  |
| 14           | 1.20<br>(30.6) | .99<br>(25.2)  |
| 16           | 1.37<br>(34.8) | 1.16<br>(29.4) |
| 18           | 1.54<br>(39.0) | 1.32<br>(33.6) |
| 20           | 1.70<br>(43.2) | 1.49<br>(37.8) |
| 22           | 1.87<br>(47.4) | 1.65<br>(42.0) |
| 24           | 2.03<br>(51.6) | 1.82<br>(46.2) |



DIMENSIONS TYPICAL FOR ALL CIRCUIT SIZES



- NOTES:**
- MATERIAL:**  
HOUSING:  
"BLANK" = NYLON (PA66), LOW HALOGEN, UNFILLED, UL94V-2, COLOR: NATURAL  
"BL" = NYLON (PA66), LOW HALOGEN, UNFILLED, UL94V-2, COLOR: BLACK  
"210" = NYLON (PA66), LOW HALOGEN, UNFILLED, UL94V-0, COLOR: NATURAL  
"400" = NYLON (PA66), LOW HALOGEN, UNFILLED, UL94V-0, COLOR: BLACK  
TERMINAL:  
BRASS ALLOY
  - FINISH (PLATING):**  
G, GS = .000030/(0.00076) MIN. SELECT GOLD OVER .000100/(0.00254) MIN. SELECT MATTE TIN OVER .000050/(0.00127) MIN. NICKEL OVERALL  
GS2 = .000015/(0.00038) MIN. SELECT GOLD OVER .000100/(0.00254) MIN. SELECT MATTE TIN OVER .000050/(0.00127) MIN. NICKEL OVERALL  
GS3 = .000050/(0.00127) MIN. SELECT GOLD OVER .000100/(0.00254) MIN. SELECT MATTE TIN OVER .000050/(0.00127) MIN. NICKEL OVERALL  
BLANK, S, MS = .000100/(0.00254) MIN. MATTE TIN OVER .000050/(0.00127) MIN. NICKEL OVERALL  
RM = .000060/(0.00152) MIN. REFLOWED MATTE TIN OVER .000050/(0.00127) MIN. NICKEL OVERALL
  - PRODUCT SPECIFICATION:** PS-5556-001
  - PACKAGING:**  
"BLANK" = BULK PACKED PER PK-5569-002 (NOT RECOMMENDED DUE TO SHIPPING AND HANDLING DAMAGE).  
"T" = TRAY PACKED PER PK-5569-003 (RECOMMENDED FOR NEW APPLICATIONS)
  - PART MATES WITH MINI-FIT JR. RECEPTACLE SERIES 5557.**
  - MOUNTING OPTIONS:**  
1 = SCREW MOUNT (SEE SD-5569-NA\* SERIES DRAWING)  
2 = PEG MOUNT
  - DISCOLORATION IN THE BANDOLIER CARRIER AREA OF THE PIN IS INHERENT TO THE PLATING PROCESS AND IS DUE TO THE MASKING EFFECT OF THE CARRIER. THIS DISCOLORATION IS IN A NON-FUNCTIONAL AREA OF THE PIN AND WILL NOT AFFECT THE PERFORMANCE OF THE HEADER ASSEMBLY.**
  - PART CONFORMS TO CLASS "B" REQUIREMENTS OF COSMETIC SPECIFICATION PS-45499-002.**
  - CONNECTORS ARE NOT TO BE MATED AND UNMATED WHILE CIRCUITS ARE LIVE.**
  - PARTS ARE NOT DESIGNED FOR CURRENT SHARING.**
  - FORMING MARKS ON PINS ARE ACCEPTABLE.**
  - CORNER CORE-OUTS ARE OPTIONAL AND MAY OR MAY NOT BE PRESENT.**



| THIS DRAWING CONTAINS INFORMATION THAT IS PROPRIETARY TO MOLEX ELECTRONIC TECHNOLOGIES, LLC AND SHOULD NOT BE USED WITHOUT WRITTEN PERMISSION |       |  |      |         |         |   |  |  |  |
|---|-------|--|------|---------|---------|---|--|--|--|
| SYMBOLS   |       | DIMENSION UNITS                                      |      | SCALE   |         | CURRENT REV DESC: MIGRATE TO ECTR   |  |  |  |
| ∇ = 0   | ∇ = 0 | IN/MM  |      | 4:1     |         | EC NO: 172489<br>DRWN: ANESSER 2018/01/26<br>CHK'D: JBELL 2018/02/20<br>APPR: FSMITH 2018/02/22<br>INITIAL REVISION:<br>DRWN: RJF 1988/02/16<br>APPR: FSMITH 2016/12/20 |  |  |  |
| ∇ = 0   | ∇ = 0 | GENERAL TOLERANCES (UNLESS SPECIFIED)                |      |         |         |   |  |  |  |
| ∇ = 0   | ∇ = 0 | MM   | INCH |         |         | PRODUCT CUSTOMER DRAWING<br>DOCUMENT NUMBER: 55690002-SD<br>DOC TYPE: PSD<br>DOC PART: 000<br>REVISION: A   |  |  |  |
| ∇ = 0   | ∇ = 0 | 4 PLACES   | ±    | ±       |         |   |  |  |  |
| ∇ = 0   | ∇ = 0 | 3 PLACES   | ±    | ±       | 0.01    | MATERIAL NUMBER: SEE CHART<br>CUSTOMER: GENERAL MARKET<br>SHEET NUMBER: 1 OF 4  |  |  |  |
| ∇ = 0   | ∇ = 0 | 2 PLACES   | ±    | 0.25    | ± 0.015 |   |  |  |  |
| ∇ = 0   | ∇ = 0 | 1 PLACE  | ±    | 0.38    | ±       | THIRD ANGLE PROJECTION<br>DRAWING: C-SIZE<br>SERIES: 5569   |  |  |  |
| ∇ = 0   | ∇ = 0 | 0 PLACES   | ±    | ±       |         |   |  |  |  |
| ∇ = 0   | ∇ = 0 | ANGULAR TOL  |      | ± 0.5 ° |         |   |  |  |  |
| ∇ = 0   | ∇ = 0 | DRAFT WHERE APPLICABLE MUST REMAIN WITHIN DIMENSIONS |      |         |         |   |  |  |  |